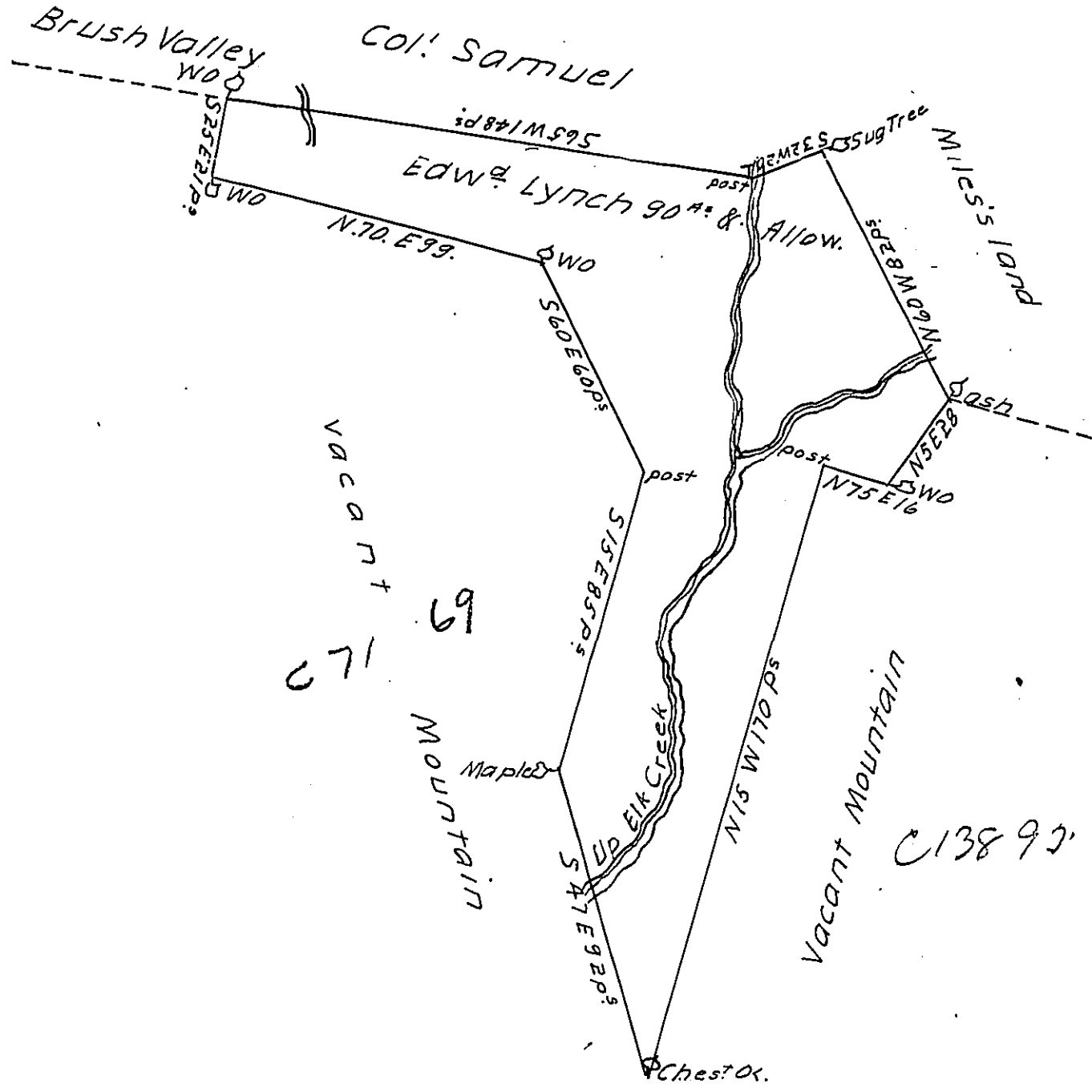


FORM NO. 1.



In Pursuance of a Warrant dated the 8<sup>th</sup> day of March 1786 Survey'd the above described Tract of land for Edward Lynch the 1<sup>st</sup> day of September following - Situate adjoining on the south side of Col. Miles's land ~~to~~ including a Gap & both sides of Elk Creek where said Creek runs thro' the South Mountain of Brush Valley in Potters Township Northumberland County - Contain- ing Ninety Acres and allowance of six Percent for Roads &c<sup>a</sup>

Jo. J. Wallis D.S.

To John Lukens, Esq. S.G.

IN TESTIMONY that the above is a copy of the original remaining on file in the Department of Internal Affairs of Pennsylvania, made conformably to an Act of Assembly approved the 16th day of February, 1833, I have hereunto set my Hand and caused the Seal of said Department to be affixed at Harrisburg, this eight day of February 1912.

*Henry Honck*  
 Secretary of Internal Affairs.